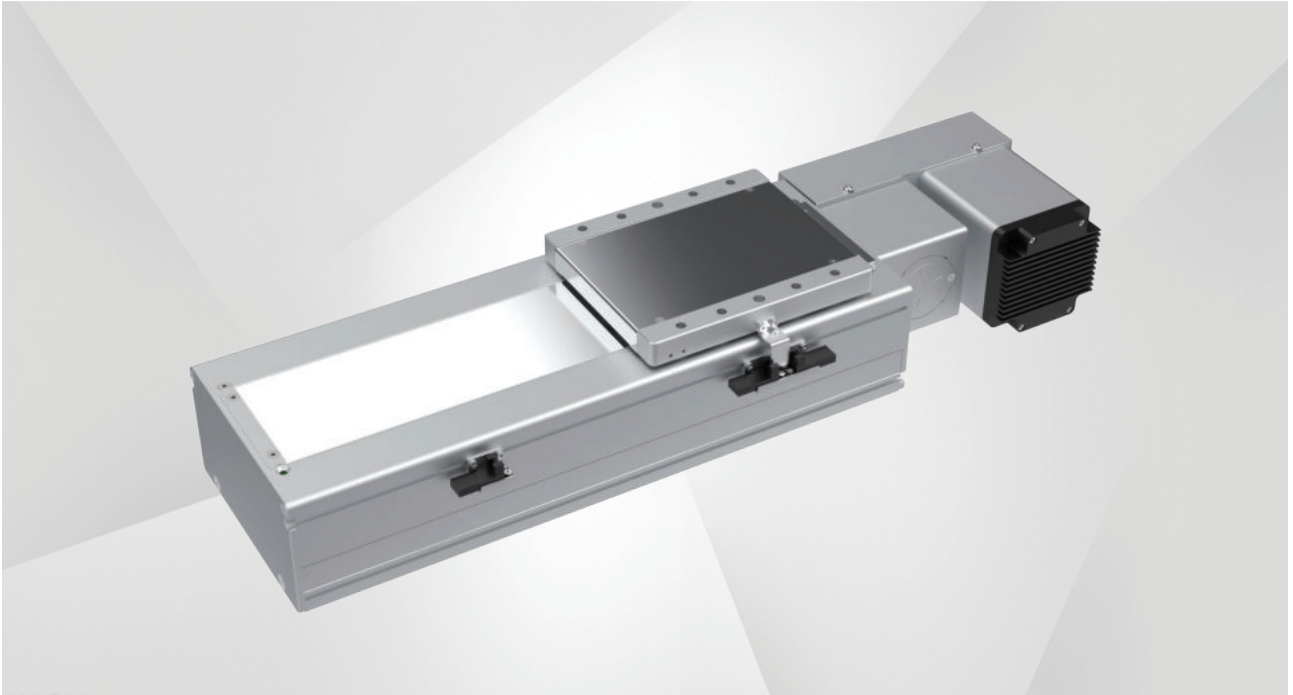
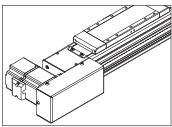


同步带模组 (全密封) -HBH17M

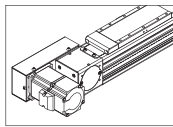
Timing Belt Module (fully sealed)



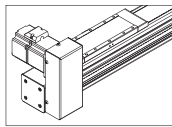
电机安装方式 How the Motor is Installed



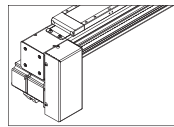
电机左折-L
Motor left side



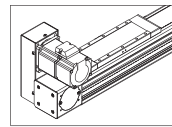
电机右折-R
Motor right side



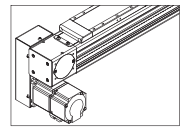
电机左上折-LU
Motor folds on the upper left



电机左下折-LD
Motor folds down left



电机右上折-RU
Motor folds up on the right



电机右下折-RD
Motor folds down on the right

型号表示方式 Guide for Model Selection

Z-Mod-HBH17M-50-100-L-75SEB-N3-FXXX-01

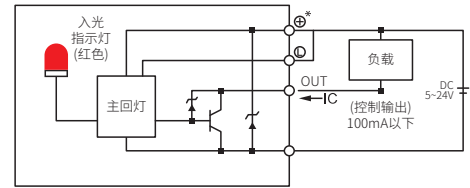
| HBH17M | 50 | 100 | L | 75SE | B | N3 | FXXX-01 |
|--------------------|--|----------------------------|---|-------------------------------------|--|---|--|
| 本体型号 Base Model | 导程 Lead 50: 50mm *导程: 电机旋转一圈, 滑台移动的直线距离。 | 行程 Stroke 100~4500mm | 电机方式 Motor way L: 左折 R: 右折 LU: 左上折 LD: 左下折 RU: 右上折 RD: 右下折 | 电机功率 Motor power 75SE: 750W伺服 | 刹车 Brakes 无: 无电机 B: 一体式电机 (带刹车) M: 一体式电机 | 感应开关数量 Sensor quantity N3: 3个NPN传感器 N2: 2个NPN传感器 N1: 1个NPN传感器 P3: 3个PNP传感器 P2: 2个PNP传感器 P1: 1个PNP传感器 N: 无 | 特殊定制 Customer number F: 非标定制选项, 若为标准品, 则为空 XXX: 客户标号 01: 版本号 |

基本参数 Parameters

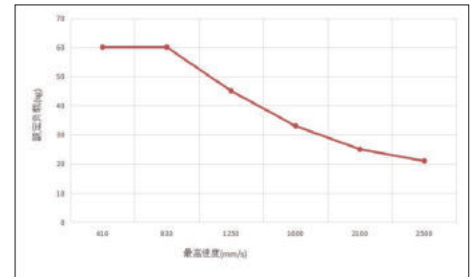
| | | | | | | |
|-----------------------------|-------------------|------|------|------|------|------|
| 电机转速 Motor speed(rpm/min) | 500 | 1000 | 1500 | 2000 | 2500 | 3000 |
| 最高速度 Maximum payload(mm/s) | 416 | 833 | 1250 | 1600 | 2100 | 2500 |
| 最大负载 Rated load(kg)(水平使用) | 60 | 60 | 45 | 33 | 25 | 21 |
| 重复位置精度 Repeatability(mm) | ±0.04 | | | | | |
| *导程 Lead(mm) | 50 | | | | | |
| 额定推力 Rated thrust(n) | 300 | | | | | |
| 行程范围 Range of travel(mm) | 100-4500MM/50行程递增 | | | | | |
| 电机功率 Motor output(w) | 750 | | | | | |
| 皮带宽度 Synchro band width(mm) | 35 | | | | | |
| 导轨规格 Guide specification | W20XH15.5-2支 | | | | | |
| 感应器 Sensor | EE-SX674(NPN) | | | | | |

- *导程: 电机旋转一圈, 滑台移动的直线距离。
- *Guide: the rotation of the motor and the straight distance of the sliding table.
- *电机加减速时间为0.4S。
- *Motor speed is 0.4S.
- *如有特殊定制请先与技术人员联系。
- If you have special customization, please contact a technician first.

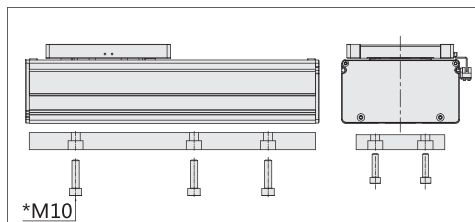
传感器接线图 Sensor Wiring Diagram



负载与速度 Load and Speed

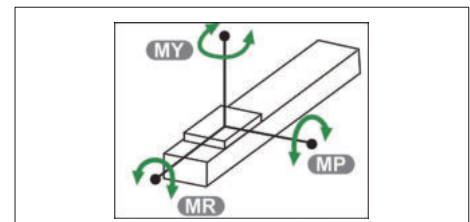


安装示意图 Installation Diagram



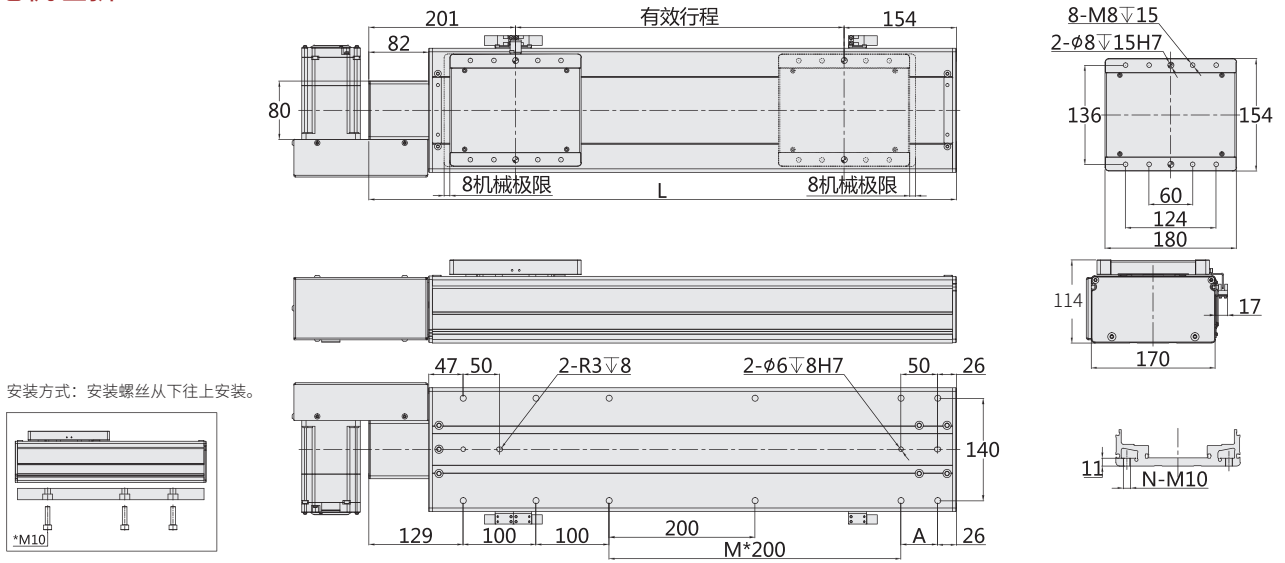
安装方式一: 安装螺丝从下往上安装。
Installation method 1: The screws are installed from bottom to bottom.

静态力矩表 Static Moment



| | |
|----|------------|
| MY | 1032 (N.M) |
| MP | 1034 (N.M) |
| MR | 908 (N.M) |

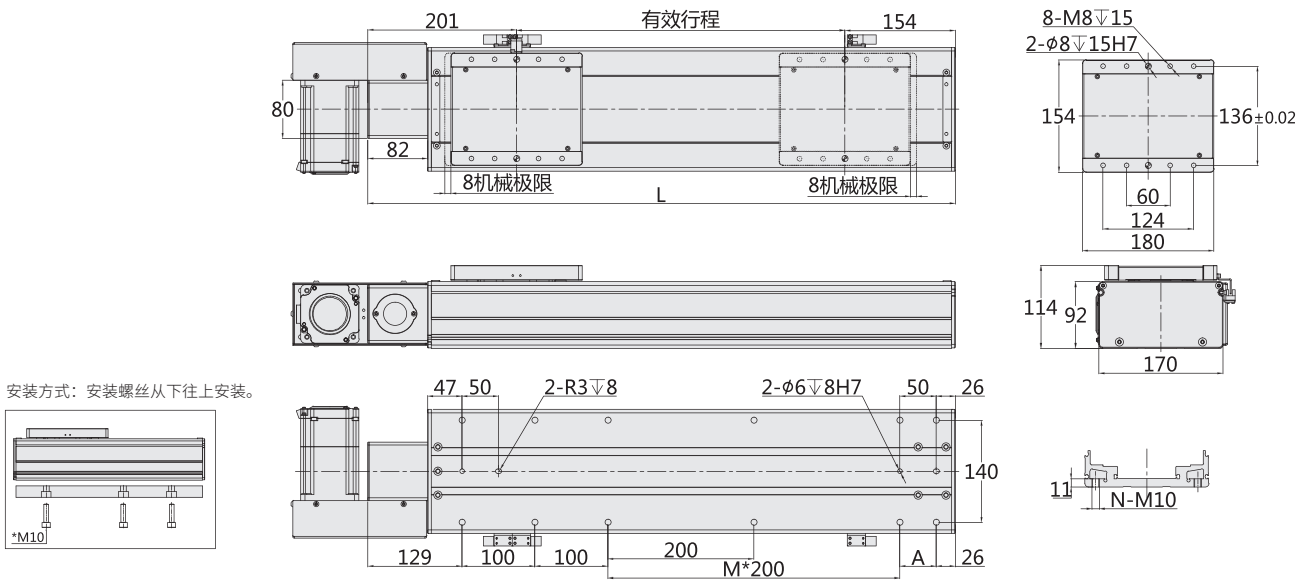
电机左折-L Motor Left Side



| 有效行程 | 300 | 350 | 400 | 450 | 500 | 550 | 600 | 650 | 700 | 750 | 800 | 850 | 900 | 950 | 1000 | 1050 | 1100 | 1150 | 1200 | 1250 | 1300 | 1350 | 1400 | 1450 | 1500 | 1550 | 1600 | 1650 |
|------|------|------|------|------|------|------|------|------|------|------|------|------|------|------|------|------|------|------|------|------|------|------|------|------|------|------|------|------|
| L | 655 | 705 | 755 | 805 | 855 | 905 | 955 | 1005 | 1055 | 1105 | 1155 | 1205 | 1255 | 1305 | 1355 | 1405 | 1455 | 1505 | 1555 | 1605 | 1655 | 1705 | 1755 | 1805 | 1855 | 1905 | 1955 | 2005 |
| A | 100 | 150 | 200 | 50 | 100 | 150 | 200 | 50 | 100 | 150 | 200 | 50 | 100 | 150 | 200 | 50 | 100 | 150 | 200 | 50 | 100 | 150 | 200 | 50 | 100 | 150 | 200 | 50 |
| M | 1 | 1 | 1 | 2 | 2 | 2 | 2 | 3 | 3 | 3 | 3 | 4 | 4 | 4 | 4 | 5 | 5 | 5 | 5 | 6 | 6 | 6 | 6 | 6 | 7 | 7 | 7 | 8 |
| N | 10 | 10 | 10 | 12 | 12 | 12 | 12 | 14 | 14 | 14 | 14 | 16 | 16 | 16 | 16 | 18 | 18 | 18 | 18 | 20 | 20 | 20 | 20 | 20 | 22 | 22 | 22 | 24 |
| KG | 16.1 | 16.9 | 17.7 | 18.5 | 19.3 | 20.1 | 20.9 | 21.7 | 22.5 | 23.3 | 24.1 | 24.9 | 25.7 | 26.5 | 27.3 | 28.1 | 28.9 | 29.7 | 30.5 | 31.3 | 32.1 | 32.9 | 33.7 | 34.5 | 35.3 | 36.1 | 36.9 | 37.7 |
| 有效行程 | 1700 | 1750 | 1800 | 1850 | 1900 | 1950 | 2000 | 2100 | 2200 | 2300 | 2400 | 2500 | 2600 | 2700 | 2800 | 2900 | 3000 | 3100 | 3200 | 3300 | 3400 | 3500 | 3600 | 3700 | 3800 | 3900 | 4000 | 4100 |
| L | 2055 | 2105 | 2155 | 2205 | 2255 | 2305 | 2355 | 2455 | 2555 | 2655 | 2755 | 2855 | 2955 | 3055 | 3155 | 3255 | 3355 | 3455 | 3555 | 3655 | 3755 | 3855 | 3955 | 4055 | 4155 | 4255 | 4355 | 4455 |
| A | 100 | 150 | 200 | 50 | 100 | 150 | 200 | 100 | 200 | 100 | 200 | 100 | 200 | 100 | 200 | 100 | 200 | 100 | 200 | 100 | 200 | 100 | 200 | 100 | 200 | 100 | 200 | 100 |
| M | 8 | 8 | 8 | 9 | 9 | 9 | 9 | 10 | 10 | 11 | 11 | 12 | 12 | 13 | 13 | 14 | 14 | 15 | 15 | 16 | 16 | 17 | 17 | 18 | 18 | 19 | 19 | 20 |
| N | 24 | 24 | 24 | 26 | 26 | 26 | 26 | 28 | 28 | 30 | 30 | 32 | 32 | 34 | 34 | 36 | 36 | 38 | 38 | 40 | 40 | 42 | 42 | 44 | 44 | 46 | 46 | 48 |
| KG | 38.5 | 39.3 | 40.1 | 40.9 | 41.7 | 42.5 | 43.3 | 44.9 | 46.5 | 48.1 | 49.7 | 51.3 | 52.9 | 54.5 | 56.1 | 57.7 | 59.3 | 60.9 | 62.5 | 64.1 | 65.7 | 67.3 | 68.9 | 70.5 | 72.1 | 73.7 | 75.3 | 76.9 |

注: 以上不含电机重量。
Note: Not including motor weight.

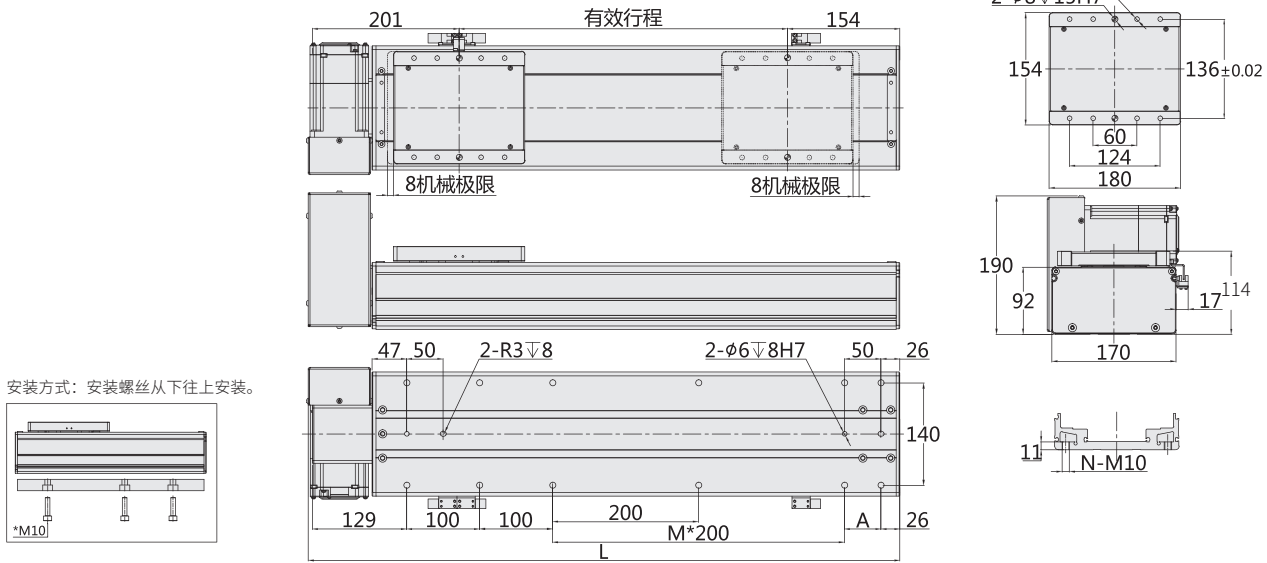
电机右折-R Motor Right Side



| 有效行程 | 300 | 350 | 400 | 450 | 500 | 550 | 600 | 650 | 700 | 750 | 800 | 850 | 900 | 950 | 1000 | 1050 | 1100 | 1150 | 1200 | 1250 | 1300 | 1350 | 1400 | 1450 | 1500 | 1550 | 1600 | 1650 |
|------|------|------|------|------|------|------|------|------|------|------|------|------|------|------|------|------|------|------|------|------|------|------|------|------|------|------|------|------|
| L | 655 | 705 | 755 | 805 | 855 | 905 | 955 | 1005 | 1055 | 1105 | 1155 | 1205 | 1255 | 1305 | 1355 | 1405 | 1455 | 1505 | 1555 | 1605 | 1655 | 1705 | 1755 | 1805 | 1855 | 1905 | 1955 | 2005 |
| A | 100 | 150 | 200 | 50 | 100 | 150 | 200 | 50 | 100 | 150 | 200 | 50 | 100 | 150 | 200 | 50 | 100 | 150 | 200 | 50 | 100 | 150 | 200 | 50 | 100 | 150 | 200 | 50 |
| M | 1 | 1 | 1 | 2 | 2 | 2 | 2 | 3 | 3 | 3 | 3 | 4 | 4 | 4 | 4 | 5 | 5 | 5 | 5 | 6 | 6 | 6 | 6 | 6 | 7 | 7 | 7 | 8 |
| N | 10 | 10 | 10 | 12 | 12 | 12 | 12 | 14 | 14 | 14 | 14 | 16 | 16 | 16 | 16 | 18 | 18 | 18 | 18 | 20 | 20 | 20 | 20 | 20 | 22 | 22 | 22 | 24 |
| KG | 16.1 | 16.9 | 17.7 | 18.5 | 19.3 | 20.1 | 20.9 | 21.7 | 22.5 | 23.3 | 24.1 | 24.9 | 25.7 | 26.5 | 27.3 | 28.1 | 28.9 | 29.7 | 30.5 | 31.3 | 32.1 | 32.9 | 33.7 | 34.5 | 35.3 | 36.1 | 36.9 | 37.7 |
| 有效行程 | 1700 | 1750 | 1800 | 1850 | 1900 | 1950 | 2000 | 2100 | 2200 | 2300 | 2400 | 2500 | 2600 | 2700 | 2800 | 2900 | 3000 | 3100 | 3200 | 3300 | 3400 | 3500 | 3600 | 3700 | 3800 | 3900 | 4000 | 4100 |
| L | 2055 | 2105 | 2155 | 2205 | 2255 | 2305 | 2355 | 2455 | 2555 | 2655 | 2755 | 2855 | 2955 | 3055 | 3155 | 3255 | 3355 | 3455 | 3555 | 3655 | 3755 | 3855 | 3955 | 4055 | 4155 | 4255 | 4355 | 4455 |
| A | 100 | 150 | 200 | 50 | 100 | 150 | 200 | 100 | 200 | 100 | 200 | 100 | 200 | 100 | 200 | 100 | 200 | 100 | 200 | 100 | 200 | 100 | 200 | 100 | 200 | 100 | 200 | 100 |
| M | 8 | 8 | 8 | 9 | 9 | 9 | 9 | 10 | 10 | 11 | 11 | 12 | 12 | 13 | 13 | 14 | 14 | 15 | 15 | 16 | 16 | 17 | 17 | 18 | 18 | 19 | 19 | 20 |
| N | 24 | 24 | 24 | 26 | 26 | 26 | 26 | 28 | 28 | 30 | 30 | 32 | 32 | 34 | 34 | 36 | 36 | 38 | 38 | 40 | 40 | 42 | 42 | 44 | 44 | 46 | 46 | 48 |
| KG | 38.5 | 39.3 | 40.1 | 40.9 | 41.7 | 42.5 | 43.3 | 44.9 | 46.5 | 48.1 | 49.7 | 51.3 | 52.9 | 54.5 | 56.1 | 57.7 | 59.3 | 60.9 | 62.5 | 64.1 | 65.7 | 67.3 | 68.9 | 70.5 | 72.1 | 73.7 | 75.3 | 76.9 |

注: 以上不含电机重量。
Note: Not including motor weight.

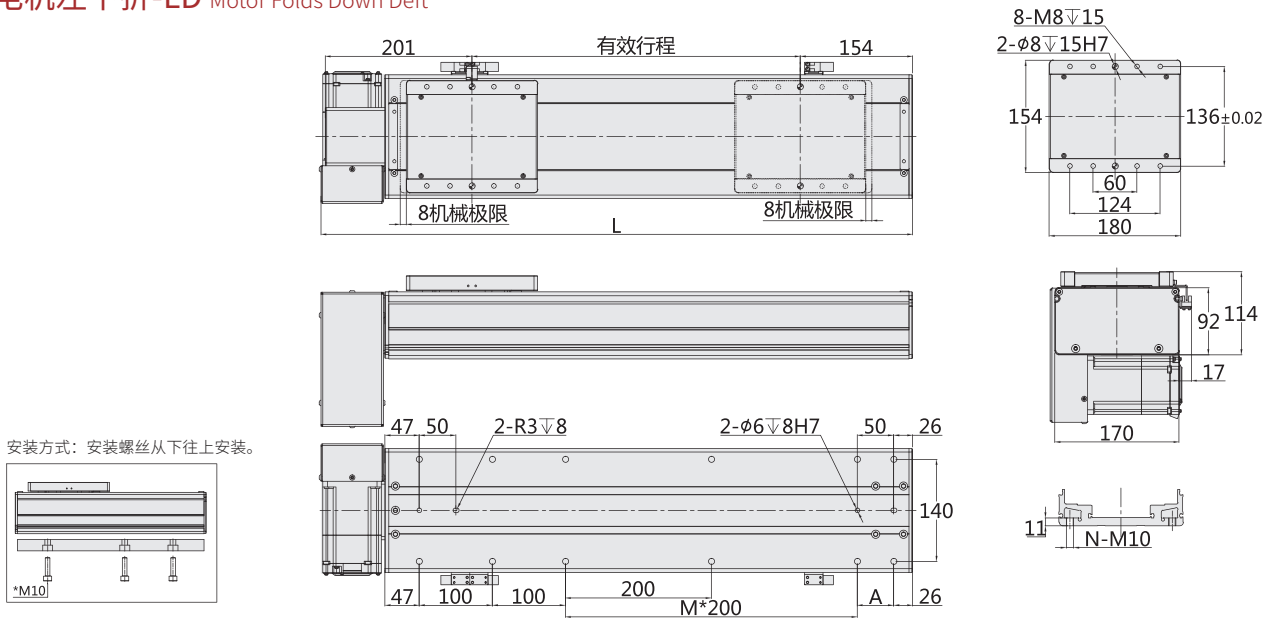
电机左上折-LU Motor Folds on the Upper Left



| | | | | | | | | | | | | | | | | | | | | | | | | | | | | |
|------|------|------|------|------|------|------|------|------|------|------|------|------|------|------|------|------|------|------|------|------|------|------|------|------|------|------|------|------|
| 有效行程 | 300 | 350 | 400 | 450 | 500 | 550 | 600 | 650 | 700 | 750 | 800 | 850 | 900 | 950 | 1000 | 1050 | 1100 | 1150 | 1200 | 1250 | 1300 | 1350 | 1400 | 1450 | 1500 | 1550 | 1600 | 1650 |
| L | 655 | 705 | 755 | 805 | 855 | 905 | 955 | 1005 | 1055 | 1105 | 1155 | 1205 | 1255 | 1305 | 1355 | 1405 | 1455 | 1505 | 1555 | 1605 | 1655 | 1705 | 1755 | 1805 | 1855 | 1905 | 1955 | 2005 |
| A | 100 | 150 | 200 | 50 | 100 | 150 | 200 | 50 | 100 | 150 | 200 | 50 | 100 | 150 | 200 | 50 | 100 | 150 | 200 | 50 | 100 | 150 | 200 | 50 | 100 | 150 | 200 | 50 |
| M | 1 | 1 | 1 | 2 | 2 | 2 | 2 | 3 | 3 | 3 | 3 | 4 | 4 | 4 | 4 | 5 | 5 | 5 | 5 | 6 | 6 | 6 | 6 | 7 | 7 | 7 | 7 | 8 |
| N | 10 | 10 | 10 | 12 | 12 | 12 | 12 | 14 | 14 | 14 | 14 | 16 | 16 | 16 | 16 | 18 | 18 | 18 | 18 | 20 | 20 | 20 | 20 | 22 | 22 | 22 | 22 | 24 |
| KG | 16.1 | 16.9 | 17.7 | 18.5 | 19.3 | 20.1 | 20.9 | 21.7 | 22.5 | 23.3 | 24.1 | 24.9 | 25.7 | 26.5 | 27.3 | 28.1 | 28.9 | 29.7 | 30.5 | 31.3 | 32.1 | 32.9 | 33.7 | 34.5 | 35.3 | 36.1 | 36.9 | 37.7 |
| 有效行程 | 1700 | 1750 | 1800 | 1850 | 1900 | 1950 | 2000 | 2100 | 2200 | 2300 | 2400 | 2500 | 2600 | 2700 | 2800 | 2900 | 3000 | 3100 | 3200 | 3300 | 3400 | 3500 | 3600 | 3700 | 3800 | 3900 | 4000 | 4100 |
| L | 2055 | 2105 | 2155 | 2205 | 2255 | 2305 | 2355 | 2455 | 2555 | 2655 | 2755 | 2855 | 2955 | 3055 | 3155 | 3255 | 3355 | 3455 | 3555 | 3655 | 3755 | 3855 | 3955 | 4055 | 4155 | 4255 | 4355 | 4455 |
| A | 100 | 150 | 200 | 50 | 100 | 150 | 200 | 100 | 200 | 100 | 200 | 100 | 200 | 100 | 200 | 100 | 200 | 100 | 200 | 100 | 200 | 100 | 200 | 100 | 200 | 100 | 200 | 100 |
| M | 8 | 8 | 8 | 9 | 9 | 9 | 9 | 10 | 10 | 11 | 11 | 12 | 12 | 13 | 13 | 14 | 14 | 15 | 15 | 16 | 16 | 17 | 17 | 18 | 18 | 19 | 19 | 20 |
| N | 24 | 24 | 24 | 26 | 26 | 26 | 26 | 28 | 28 | 30 | 30 | 32 | 32 | 34 | 34 | 36 | 36 | 38 | 38 | 40 | 40 | 42 | 42 | 44 | 44 | 46 | 46 | 48 |
| KG | 38.5 | 39.3 | 40.1 | 40.9 | 41.7 | 42.5 | 43.3 | 44.9 | 46.5 | 48.1 | 49.7 | 51.3 | 52.9 | 54.5 | 56.1 | 57.7 | 59.3 | 60.9 | 62.5 | 64.1 | 65.7 | 67.3 | 68.9 | 70.5 | 72.1 | 73.7 | 75.3 | 76.9 |

注：以上不含电机重量。
Note: Not including motor weight.

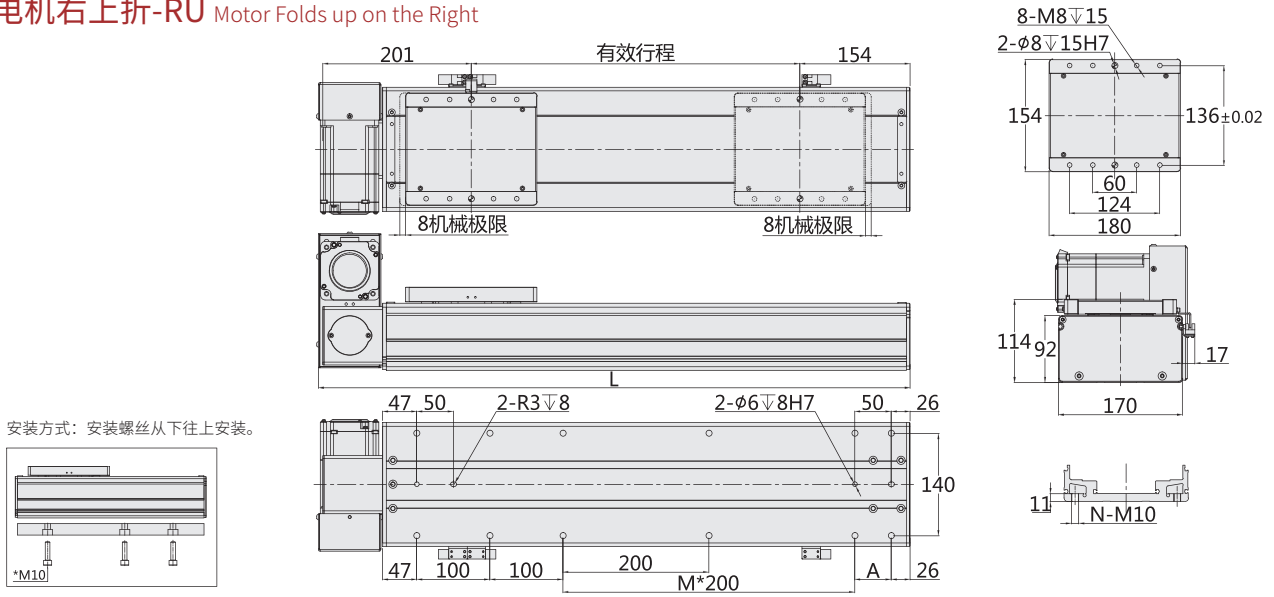
电机左下折-LD Motor Folds Down Deft



| | | | | | | | | | | | | | | | | | | | | | | | | | | | | |
|------|------|------|------|------|------|------|------|------|------|------|------|------|------|------|------|------|------|------|------|------|------|------|------|------|------|------|------|------|
| 有效行程 | 300 | 350 | 400 | 450 | 500 | 550 | 600 | 650 | 700 | 750 | 800 | 850 | 900 | 950 | 1000 | 1050 | 1100 | 1150 | 1200 | 1250 | 1300 | 1350 | 1400 | 1450 | 1500 | 1550 | 1600 | 1650 |
| L | 655 | 705 | 755 | 805 | 855 | 905 | 955 | 1005 | 1055 | 1105 | 1155 | 1205 | 1255 | 1305 | 1355 | 1405 | 1455 | 1505 | 1555 | 1605 | 1655 | 1705 | 1755 | 1805 | 1855 | 1905 | 1955 | 2005 |
| A | 100 | 150 | 200 | 50 | 100 | 150 | 200 | 50 | 100 | 150 | 200 | 50 | 100 | 150 | 200 | 50 | 100 | 150 | 200 | 50 | 100 | 150 | 200 | 50 | 100 | 150 | 200 | 50 |
| M | 1 | 1 | 1 | 2 | 2 | 2 | 2 | 3 | 3 | 3 | 3 | 4 | 4 | 4 | 4 | 5 | 5 | 5 | 5 | 6 | 6 | 6 | 6 | 7 | 7 | 7 | 7 | 8 |
| N | 10 | 10 | 10 | 12 | 12 | 12 | 12 | 14 | 14 | 14 | 14 | 16 | 16 | 16 | 16 | 18 | 18 | 18 | 18 | 20 | 20 | 20 | 20 | 22 | 22 | 22 | 22 | 24 |
| KG | 16.1 | 16.9 | 17.7 | 18.5 | 19.3 | 20.1 | 20.9 | 21.7 | 22.5 | 23.3 | 24.1 | 24.9 | 25.7 | 26.5 | 27.3 | 28.1 | 28.9 | 29.7 | 30.5 | 31.3 | 32.1 | 32.9 | 33.7 | 34.5 | 35.3 | 36.1 | 36.9 | 37.7 |
| 有效行程 | 1700 | 1750 | 1800 | 1850 | 1900 | 1950 | 2000 | 2100 | 2200 | 2300 | 2400 | 2500 | 2600 | 2700 | 2800 | 2900 | 3000 | 3100 | 3200 | 3300 | 3400 | 3500 | 3600 | 3700 | 3800 | 3900 | 4000 | 4100 |
| L | 2055 | 2105 | 2155 | 2205 | 2255 | 2305 | 2355 | 2455 | 2555 | 2655 | 2755 | 2855 | 2955 | 3055 | 3155 | 3255 | 3355 | 3455 | 3555 | 3655 | 3755 | 3855 | 3955 | 4055 | 4155 | 4255 | 4355 | 4455 |
| A | 100 | 150 | 200 | 50 | 100 | 150 | 200 | 100 | 200 | 100 | 200 | 100 | 200 | 100 | 200 | 100 | 200 | 100 | 200 | 100 | 200 | 100 | 200 | 100 | 200 | 100 | 200 | 100 |
| M | 8 | 8 | 8 | 9 | 9 | 9 | 9 | 10 | 10 | 11 | 11 | 12 | 12 | 13 | 13 | 14 | 14 | 15 | 15 | 16 | 16 | 17 | 17 | 18 | 18 | 19 | 19 | 20 |
| N | 24 | 24 | 24 | 26 | 26 | 26 | 26 | 28 | 28 | 30 | 30 | 32 | 32 | 34 | 34 | 36 | 36 | 38 | 38 | 40 | 40 | 42 | 42 | 44 | 44 | 46 | 46 | 48 |
| KG | 38.5 | 39.3 | 40.1 | 40.9 | 41.7 | 42.5 | 43.3 | 44.9 | 46.5 | 48.1 | 49.7 | 51.3 | 52.9 | 54.5 | 56.1 | 57.7 | 59.3 | 60.9 | 62.5 | 64.1 | 65.7 | 67.3 | 68.9 | 70.5 | 72.1 | 73.7 | 75.3 | 76.9 |

注：以上不含电机重量。
Note: Not including motor weight.

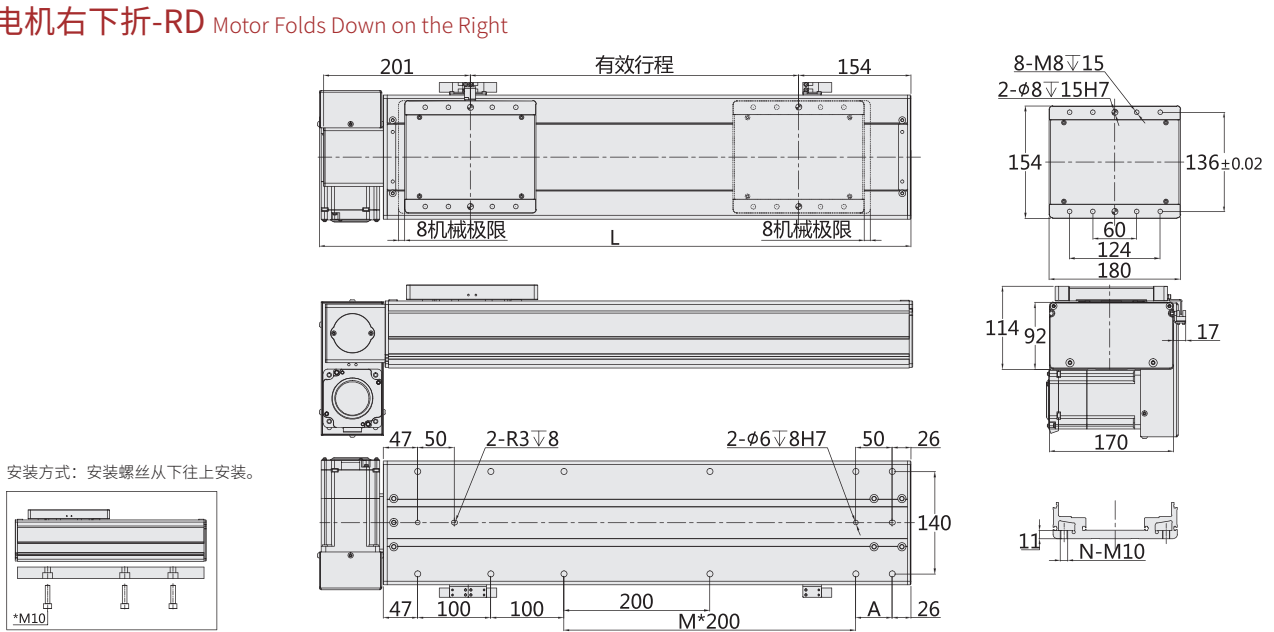
电机右上折-RU Motor Folds up on the Right



| | | | | | | | | | | | | | | | | | | | | | | | | | | | | |
|------|------|------|------|------|------|------|------|------|------|------|------|------|------|------|------|------|------|------|------|------|------|------|------|------|------|------|------|------|
| 有效行程 | 300 | 350 | 400 | 450 | 500 | 550 | 600 | 650 | 700 | 750 | 800 | 850 | 900 | 950 | 1000 | 1050 | 1100 | 1150 | 1200 | 1250 | 1300 | 1350 | 1400 | 1450 | 1500 | 1550 | 1600 | 1650 |
| L | 655 | 705 | 755 | 805 | 855 | 905 | 955 | 1005 | 1055 | 1105 | 1155 | 1205 | 1255 | 1305 | 1355 | 1405 | 1455 | 1505 | 1555 | 1605 | 1655 | 1705 | 1755 | 1805 | 1855 | 1905 | 1955 | 2005 |
| A | 100 | 150 | 200 | 50 | 100 | 150 | 200 | 50 | 100 | 150 | 200 | 50 | 100 | 150 | 200 | 50 | 100 | 150 | 200 | 50 | 100 | 150 | 200 | 50 | 100 | 150 | 200 | 50 |
| M | 1 | 1 | 1 | 2 | 2 | 2 | 2 | 3 | 3 | 3 | 3 | 4 | 4 | 4 | 4 | 5 | 5 | 5 | 5 | 6 | 6 | 6 | 6 | 7 | 7 | 7 | 7 | 8 |
| N | 10 | 10 | 10 | 12 | 12 | 12 | 12 | 14 | 14 | 14 | 14 | 16 | 16 | 16 | 16 | 18 | 18 | 18 | 18 | 20 | 20 | 20 | 20 | 22 | 22 | 22 | 22 | 24 |
| KG | 16.1 | 16.9 | 17.7 | 18.5 | 19.3 | 20.1 | 20.9 | 21.7 | 22.5 | 23.3 | 24.1 | 24.9 | 25.7 | 26.5 | 27.3 | 28.1 | 28.9 | 29.7 | 30.5 | 31.3 | 32.1 | 32.9 | 33.7 | 34.5 | 35.3 | 36.1 | 36.9 | 37.7 |
| 有效行程 | 1700 | 1750 | 1800 | 1850 | 1900 | 1950 | 2000 | 2100 | 2200 | 2300 | 2400 | 2500 | 2600 | 2700 | 2800 | 2900 | 3000 | 3100 | 3200 | 3300 | 3400 | 3500 | 3600 | 3700 | 3800 | 3900 | 4000 | 4100 |
| L | 2055 | 2105 | 2155 | 2205 | 2255 | 2305 | 2355 | 2455 | 2555 | 2655 | 2755 | 2855 | 2955 | 3055 | 3155 | 3255 | 3355 | 3455 | 3555 | 3655 | 3755 | 3855 | 3955 | 4055 | 4155 | 4255 | 4355 | 4455 |
| A | 100 | 150 | 200 | 50 | 100 | 150 | 200 | 100 | 200 | 100 | 200 | 100 | 200 | 100 | 200 | 100 | 200 | 100 | 200 | 100 | 200 | 100 | 200 | 100 | 200 | 100 | 200 | 100 |
| M | 8 | 8 | 8 | 9 | 9 | 9 | 9 | 10 | 10 | 11 | 11 | 12 | 12 | 13 | 13 | 14 | 14 | 15 | 15 | 16 | 16 | 17 | 17 | 18 | 18 | 19 | 19 | 20 |
| N | 24 | 24 | 24 | 26 | 26 | 26 | 26 | 28 | 28 | 30 | 30 | 32 | 32 | 34 | 34 | 36 | 36 | 38 | 38 | 40 | 40 | 42 | 42 | 44 | 44 | 46 | 46 | 48 |
| KG | 38.5 | 39.3 | 40.1 | 40.9 | 41.7 | 42.5 | 43.3 | 44.9 | 46.5 | 48.1 | 49.7 | 51.3 | 52.9 | 54.5 | 56.1 | 57.7 | 59.3 | 60.9 | 62.5 | 64.1 | 65.7 | 67.3 | 68.9 | 70.5 | 72.1 | 73.7 | 75.3 | 76.9 |

注：以上不含电机重量。
Note: Not including motor weight.

电机右下折-RD Motor Folds Down on the Right



| | | | | | | | | | | | | | | | | | | | | | | | | | | | | |
|------|------|------|------|------|------|------|------|------|------|------|------|------|------|------|------|------|------|------|------|------|------|------|------|------|------|------|------|------|
| 有效行程 | 300 | 350 | 400 | 450 | 500 | 550 | 600 | 650 | 700 | 750 | 800 | 850 | 900 | 950 | 1000 | 1050 | 1100 | 1150 | 1200 | 1250 | 1300 | 1350 | 1400 | 1450 | 1500 | 1550 | 1600 | 1650 |
| L | 655 | 705 | 755 | 805 | 855 | 905 | 955 | 1005 | 1055 | 1105 | 1155 | 1205 | 1255 | 1305 | 1355 | 1405 | 1455 | 1505 | 1555 | 1605 | 1655 | 1705 | 1755 | 1805 | 1855 | 1905 | 1955 | 2005 |
| A | 100 | 150 | 200 | 50 | 100 | 150 | 200 | 50 | 100 | 150 | 200 | 50 | 100 | 150 | 200 | 50 | 100 | 150 | 200 | 50 | 100 | 150 | 200 | 50 | 100 | 150 | 200 | 50 |
| M | 1 | 1 | 1 | 2 | 2 | 2 | 2 | 3 | 3 | 3 | 3 | 4 | 4 | 4 | 4 | 5 | 5 | 5 | 5 | 6 | 6 | 6 | 6 | 7 | 7 | 7 | 7 | 8 |
| N | 10 | 10 | 10 | 12 | 12 | 12 | 12 | 14 | 14 | 14 | 14 | 16 | 16 | 16 | 16 | 18 | 18 | 18 | 18 | 20 | 20 | 20 | 20 | 22 | 22 | 22 | 22 | 24 |
| KG | 16.1 | 16.9 | 17.7 | 18.5 | 19.3 | 20.1 | 20.9 | 21.7 | 22.5 | 23.3 | 24.1 | 24.9 | 25.7 | 26.5 | 27.3 | 28.1 | 28.9 | 29.7 | 30.5 | 31.3 | 32.1 | 32.9 | 33.7 | 34.5 | 35.3 | 36.1 | 36.9 | 37.7 |
| 有效行程 | 1700 | 1750 | 1800 | 1850 | 1900 | 1950 | 2000 | 2100 | 2200 | 2300 | 2400 | 2500 | 2600 | 2700 | 2800 | 2900 | 3000 | 3100 | 3200 | 3300 | 3400 | 3500 | 3600 | 3700 | 3800 | 3900 | 4000 | 4100 |
| L | 2055 | 2105 | 2155 | 2205 | 2255 | 2305 | 2355 | 2455 | 2555 | 2655 | 2755 | 2855 | 2955 | 3055 | 3155 | 3255 | 3355 | 3455 | 3555 | 3655 | 3755 | 3855 | 3955 | 4055 | 4155 | 4255 | 4355 | 4455 |
| A | 100 | 150 | 200 | 50 | 100 | 150 | 200 | 100 | 200 | 100 | 200 | 100 | 200 | 100 | 200 | 100 | 200 | 100 | 200 | 100 | 200 | 100 | 200 | 100 | 200 | 100 | 200 | 100 |
| M | 8 | 8 | 8 | 9 | 9 | 9 | 9 | 10 | 10 | 11 | 11 | 12 | 12 | 13 | 13 | 14 | 14 | 15 | 15 | 16 | 16 | 17 | 17 | 18 | 18 | 19 | 19 | 20 |
| N | 24 | 24 | 24 | 26 | 26 | 26 | 26 | 28 | 28 | 30 | 30 | 32 | 32 | 34 | 34 | 36 | 36 | 38 | 38 | 40 | 40 | 42 | 42 | 44 | 44 | 46 | 46 | 48 |
| KG | 38.5 | 39.3 | 40.1 | 40.9 | 41.7 | 42.5 | 43.3 | 44.9 | 46.5 | 48.1 | 49.7 | 51.3 | 52.9 | 54.5 | 56.1 | 57.7 | 59.3 | 60.9 | 62.5 | 64.1 | 65.7 | 67.3 | 68.9 | 70.5 | 72.1 | 73.7 | 75.3 | 76.9 |

注：以上不含电机重量。
Note: Not including motor weight.